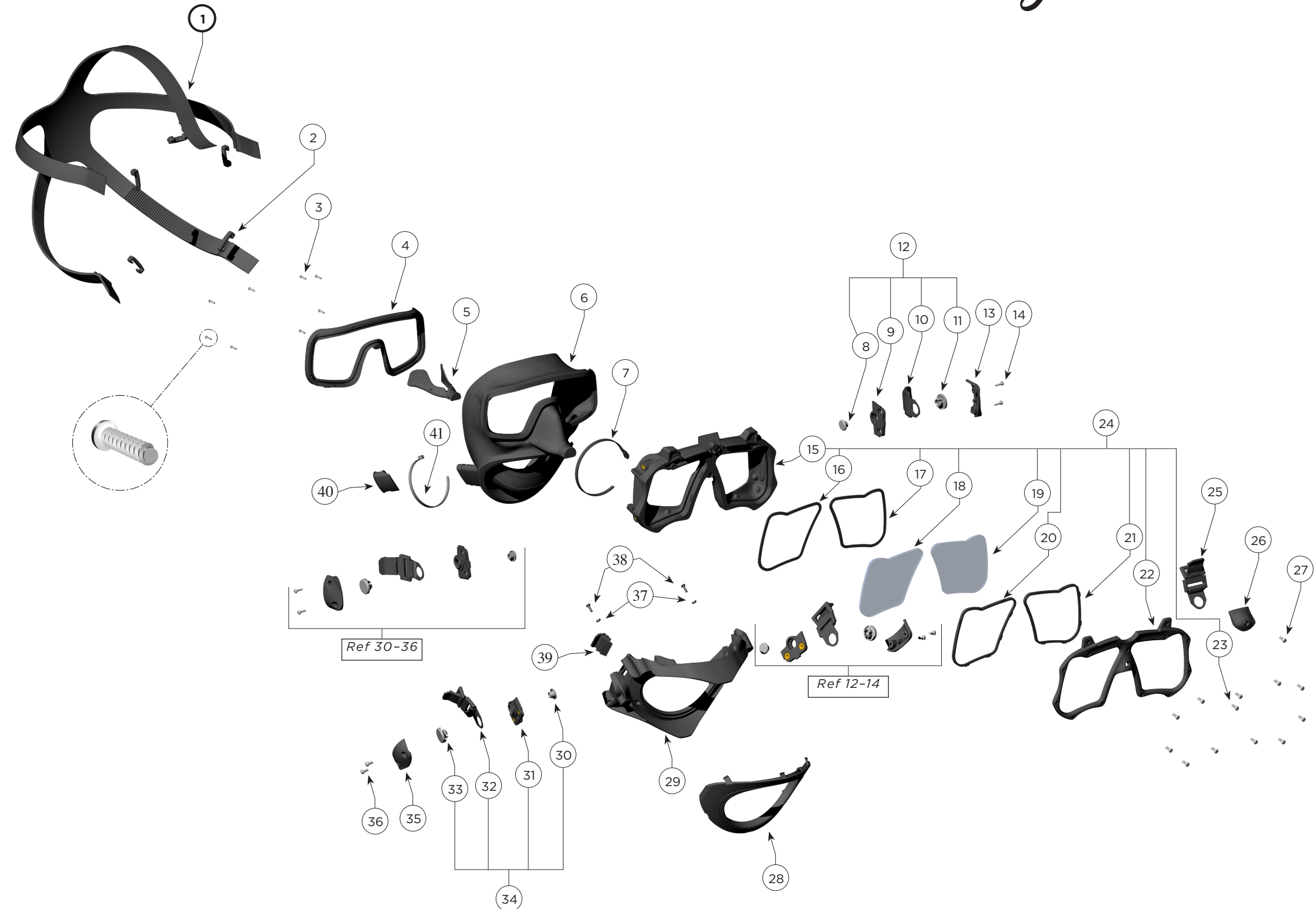


# Mask, M-48 MOD-1, No Pod P/N 805-175

Location #	Part #	Description
1	810-007	Mask Strap
2	820-225	Strap Keeper
3	830-050	Screw
4	820-235	Skirt Lens Body Retainer
5	805-130	Nose Pinch Assembly
6	810-017	Mask Skirt
7	820-091	Low Profile Tie Wrap
8	820-025	Lock Plug
9	820-227	Buckle Mount Plate, Left
10	805-028	Buckle Assembly, Non-Mag
11	820-026	Buckle Tab Hold Plug
12	805-153	Buckle Assembly, Non-Mag, Metal/Plastic, Left
13	820-233	Buckle Cap, Left
14	830-014	Screw
15	820-220	Lens Body
16	810-150	Lens Gasket, Right
17	810-151	Lens Gasket, Left
18	865-010	Lens, Right
19	865-011	Lens, Left
20	820-223	Lens Keeper, Right
21	820-224	Lens Keeper, Left
22	820-238	Lens Keeper Retainer
23	830-011	Screw
24	805-140	Lens Body Assembly
25	805-028	Buckle Assembly, Non-Mag
26	820-230	Buckle Cap, Top
27	830-011	Screw
28	820-041	Jaw Frame Retainer
29	820-036	Jaw Frame
30	820-025	Lock Plug
31	820-226	Buckle Mount Plate, Right
32	805-028	Buckle Assembly, Non-Mag
33	820-026	Buckle Tab Hold Plug
34	805-152	Buckle Assembly, Non-Mag, Right
35	820-232	Buckle Cap, Right
36	830-014	Screw
37	330-205	Washer
38	830-011	Screw
39	820-045	Pod Catch
40	820-155	Comm Port Plug
41	520-038	Tie Wrap



## Option Available

805-015	Scuba Pod (not shown this BlowApart)
---------	--------------------------------------

**NOTE:** Although some components herein, are labeled, "Non-Mag", That claim is based on tests performed at initial production startup of this mask, and NOT based on any ongoing testing. If this product is to be used where the equipment needs to have a low, or non magnetic signature, it is the responsibility of the end user to apply any specialized testing, to determine if the equipment will pass any needed, low or non magnetic requirements.



Kirby Morgan Dive Systems, Inc.<sup>®</sup> 1430 Jason Way, Santa Maria, CA 93455

Phone: 805/928-7772 Fax: 805/928-0342

[www.KirbyMorgan.com](http://www.KirbyMorgan.com) e-mail: [kmdsi@KirbyMorgan.com](mailto:kmdsi@KirbyMorgan.com)