



Kirby Morgan Dive Systems, Inc.®

1430 Jason Way Santa Maria, California 93455

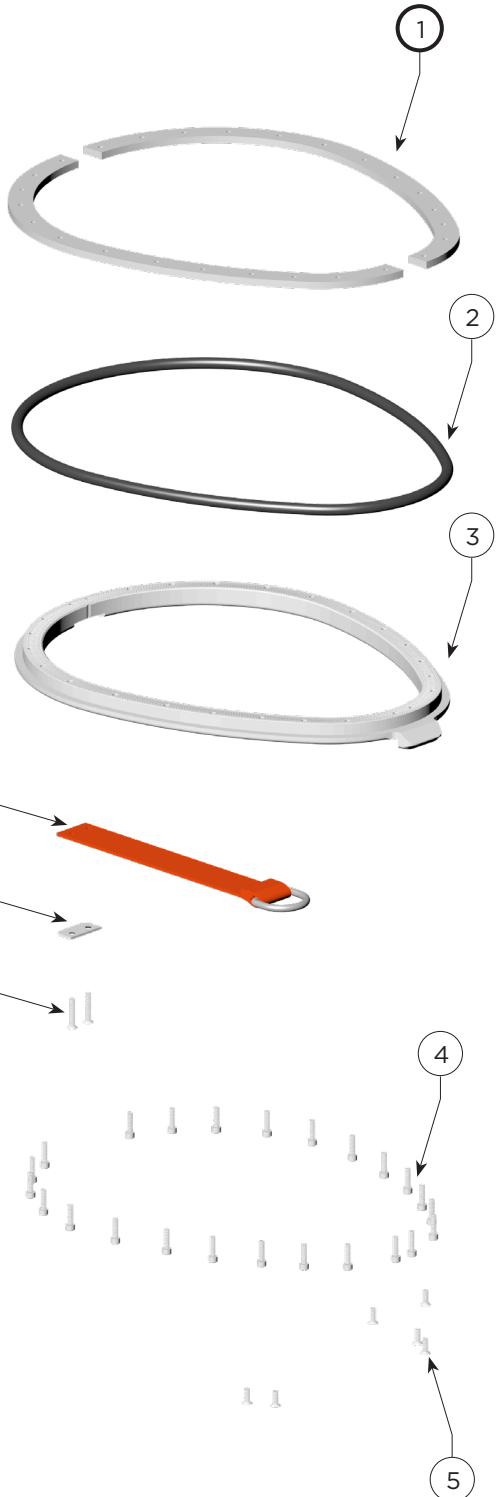
Phone: 805/928-7772 Fax: 805/928-0342

www.KirbyMorgan.com email: kmdsi@KirbyMorgan.com

Part #525-230

Dry Suit Neck Ring Kit

For All Kirby Morgan® Helmets (Except the SL 17B)



Loc	Part Number	Description	Qty
1	540-546	Split Ring, Stainless Steel	2
2	510-450	O-ring	1
3	560-542	Stepped Ring, Stainless Steel	1
4	530-024	Screw	26
5	530-022	Screw	6
6	530-220	Screw	2
7	540-115	Strap Plate	1
8	505-142	Pull Strap Assembly	1

Due to the inconsistencies of the dry suit manufacturer's material, the screws in this kit may not be the proper length. Please contact the dry suit manufacturer for the appropriate length of screw.

⚠ CAUTION

Use only KMDSI original replacement parts. The use of other manufacturers' parts will interfere with the performance characteristics of your life support equipment and may jeopardize your safety. Additionally, any substitutions will void any warranties offered by KMDSI. When ordering spares, always insist on Kirby Morgan Genuine Parts.

